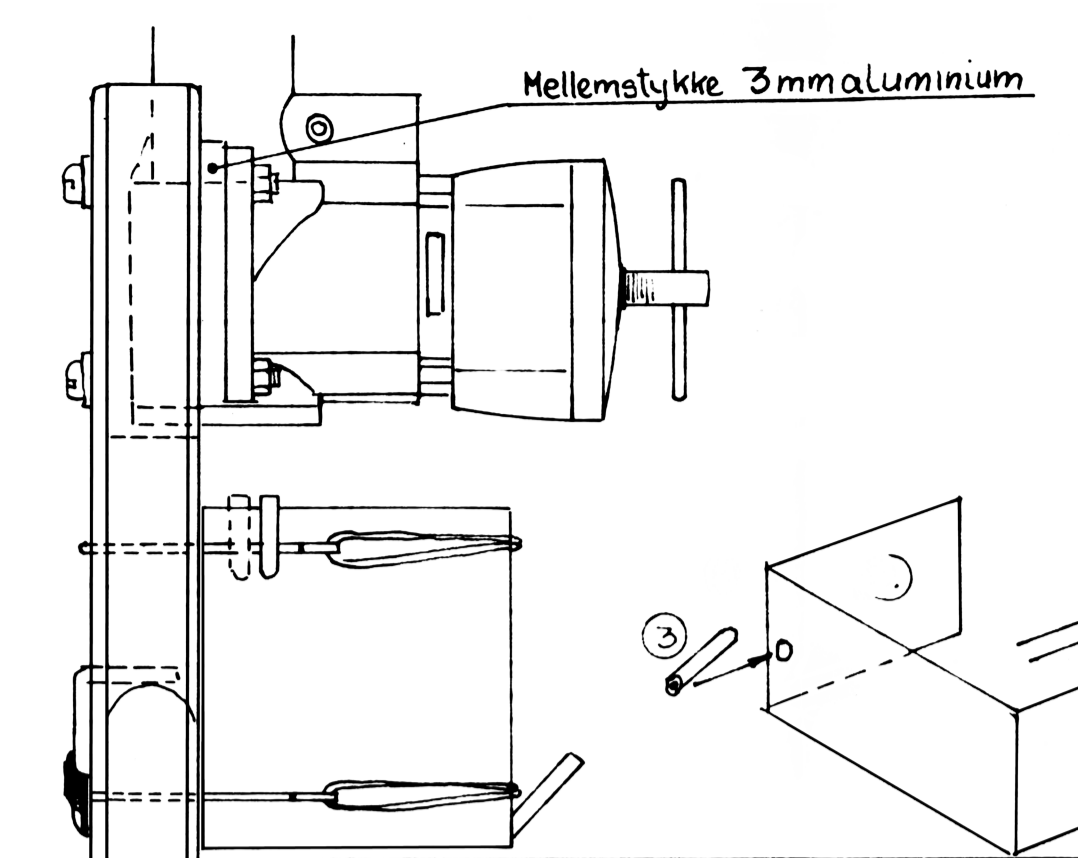


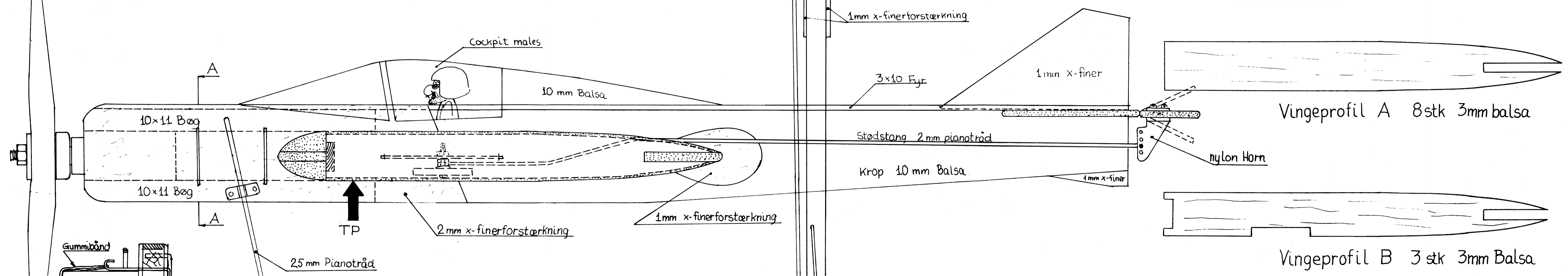
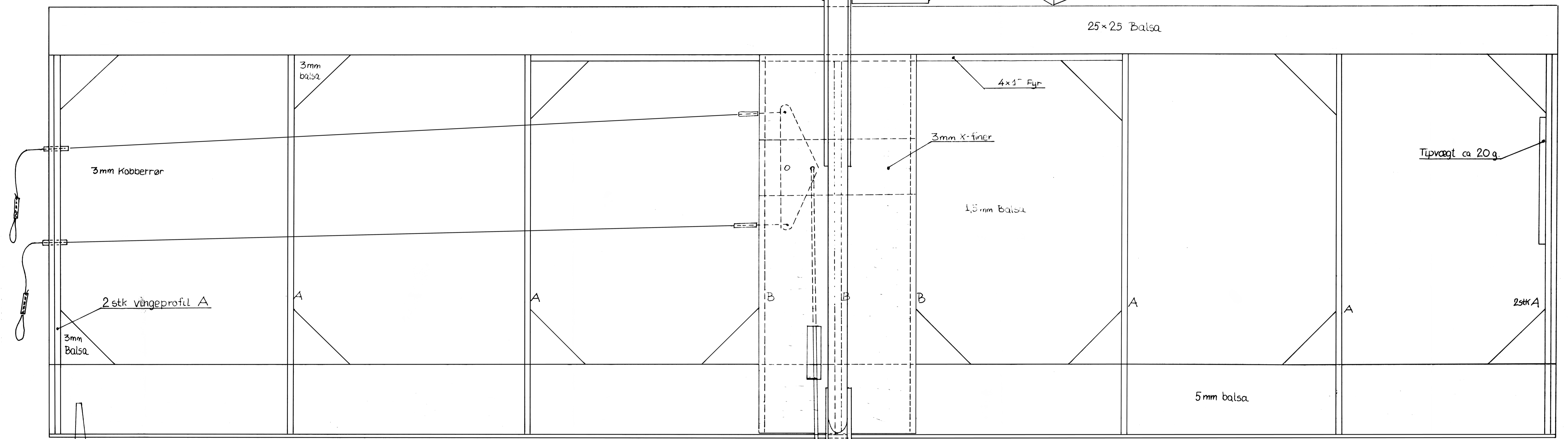
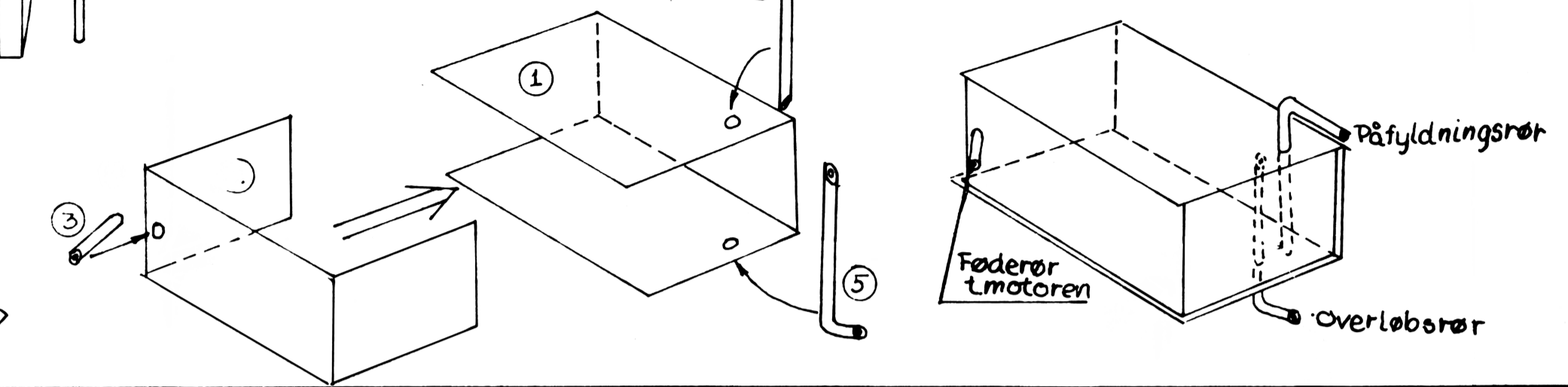
Dele til tank

hvidblik (konservesdåse) eller messingfolie

3mm Kobbertråd

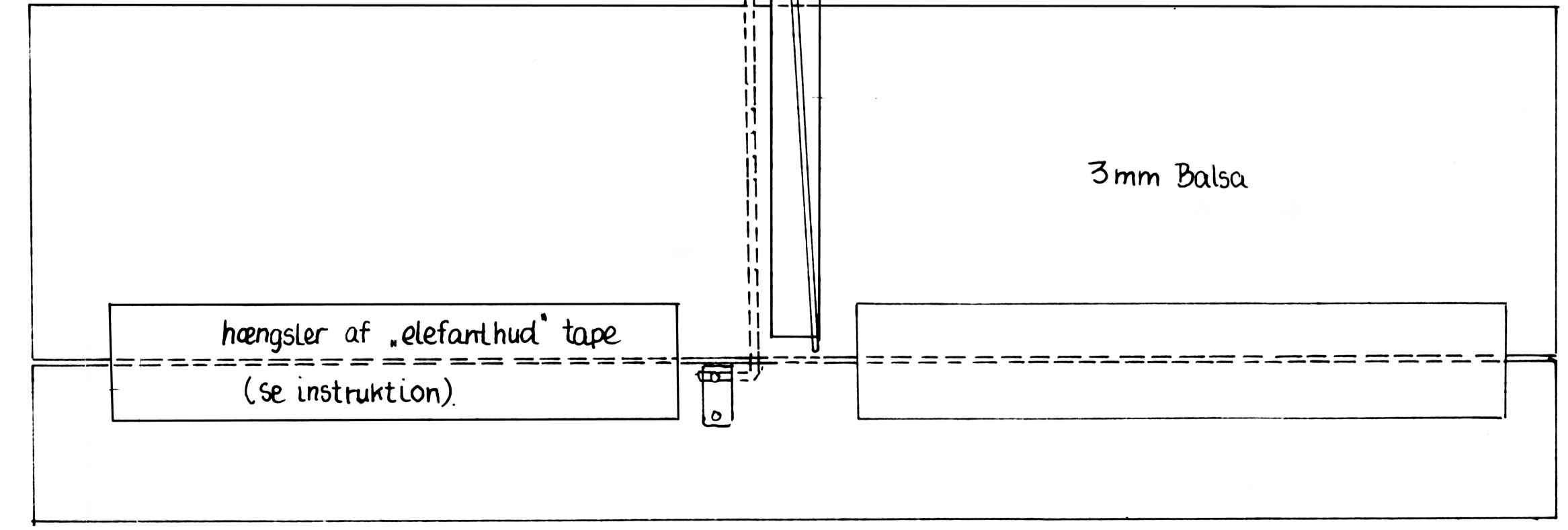
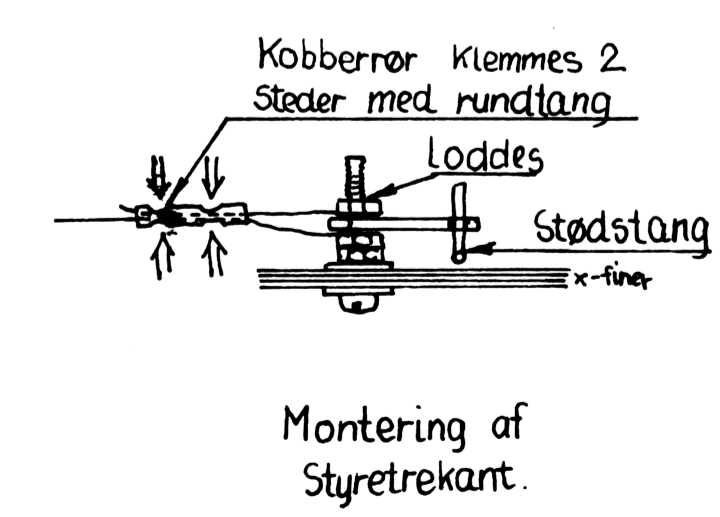
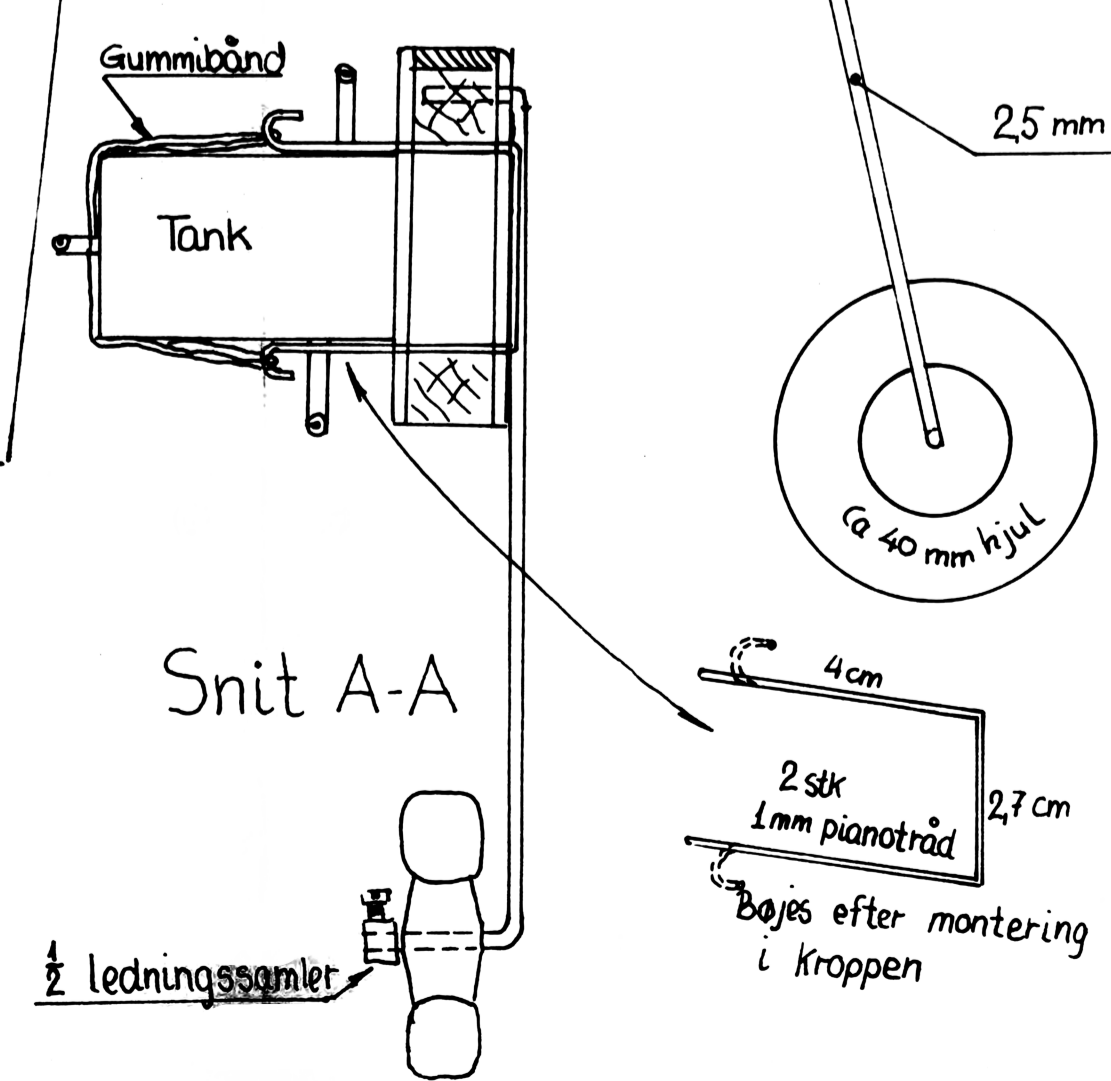


Opbygning af tank



Vingeprofil A 8stk 3mm balsa

Vingeprofil B 3 stk 3mm Balsa



HR 46 Linestyreret begyndermodel	
Spændvidde	80 cm
Længde	ca 60 cm
Motor:	25 - 35 cm ³
Vægt flyveklar:	500 - 650 g
Konstruktør:	Hans Rabenhøj