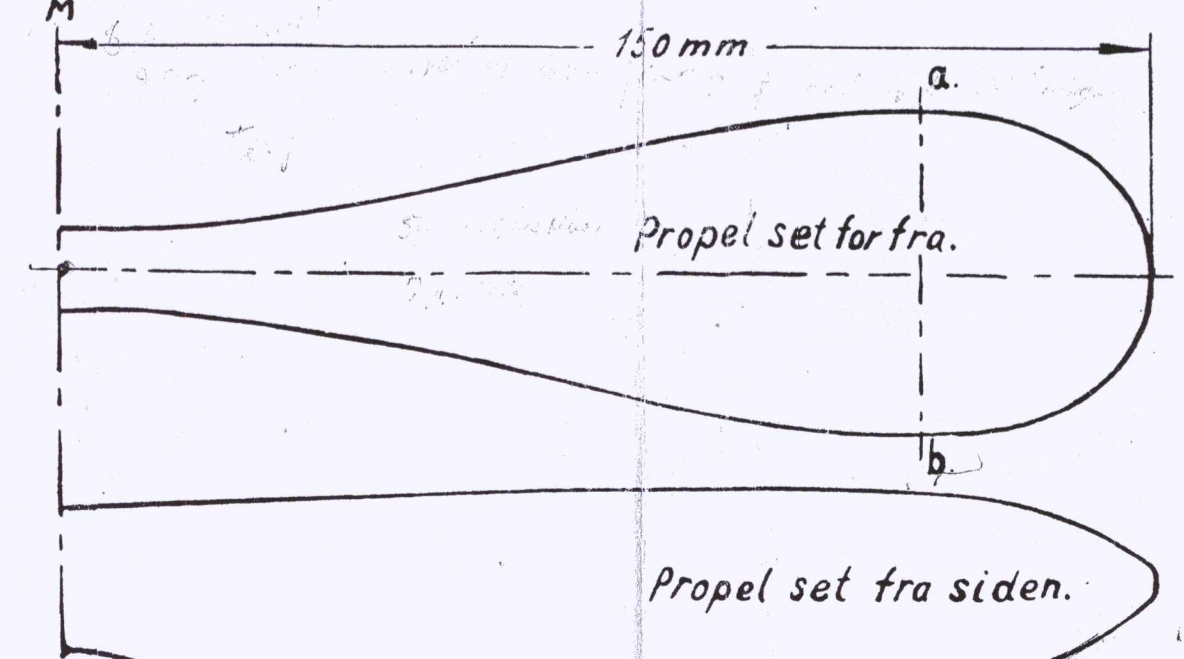
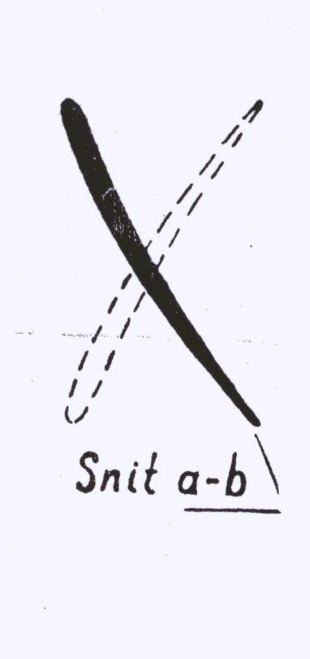
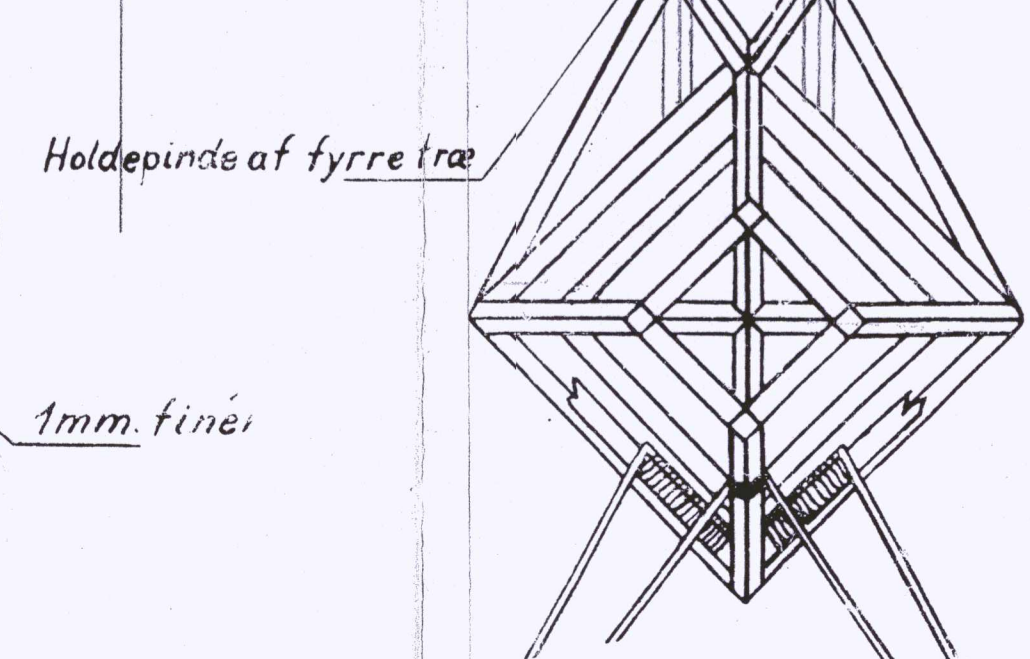
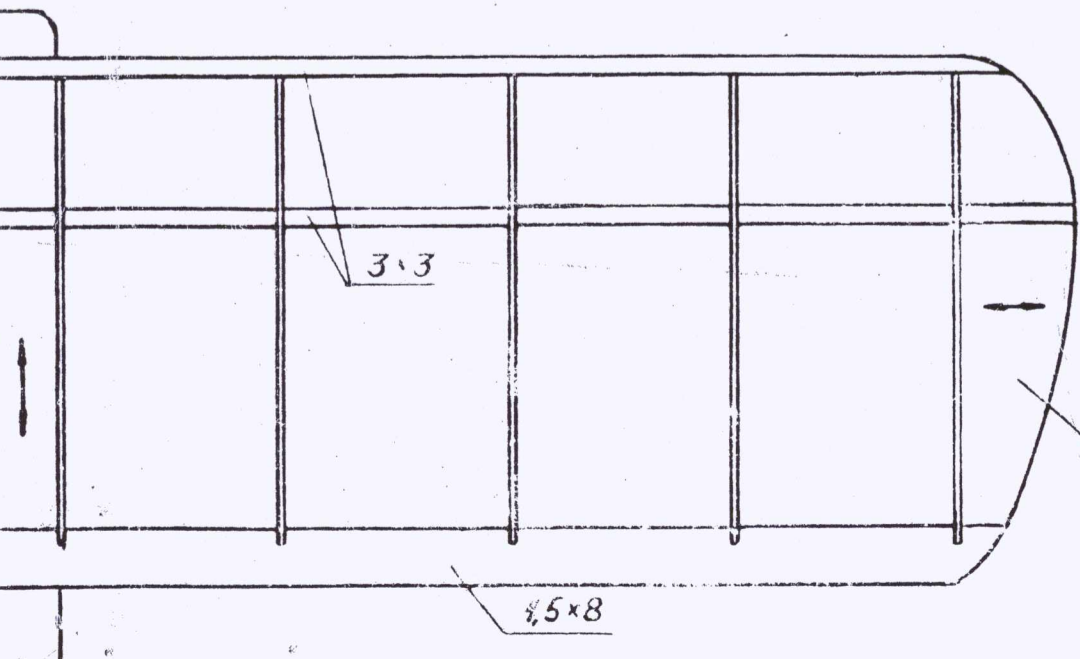
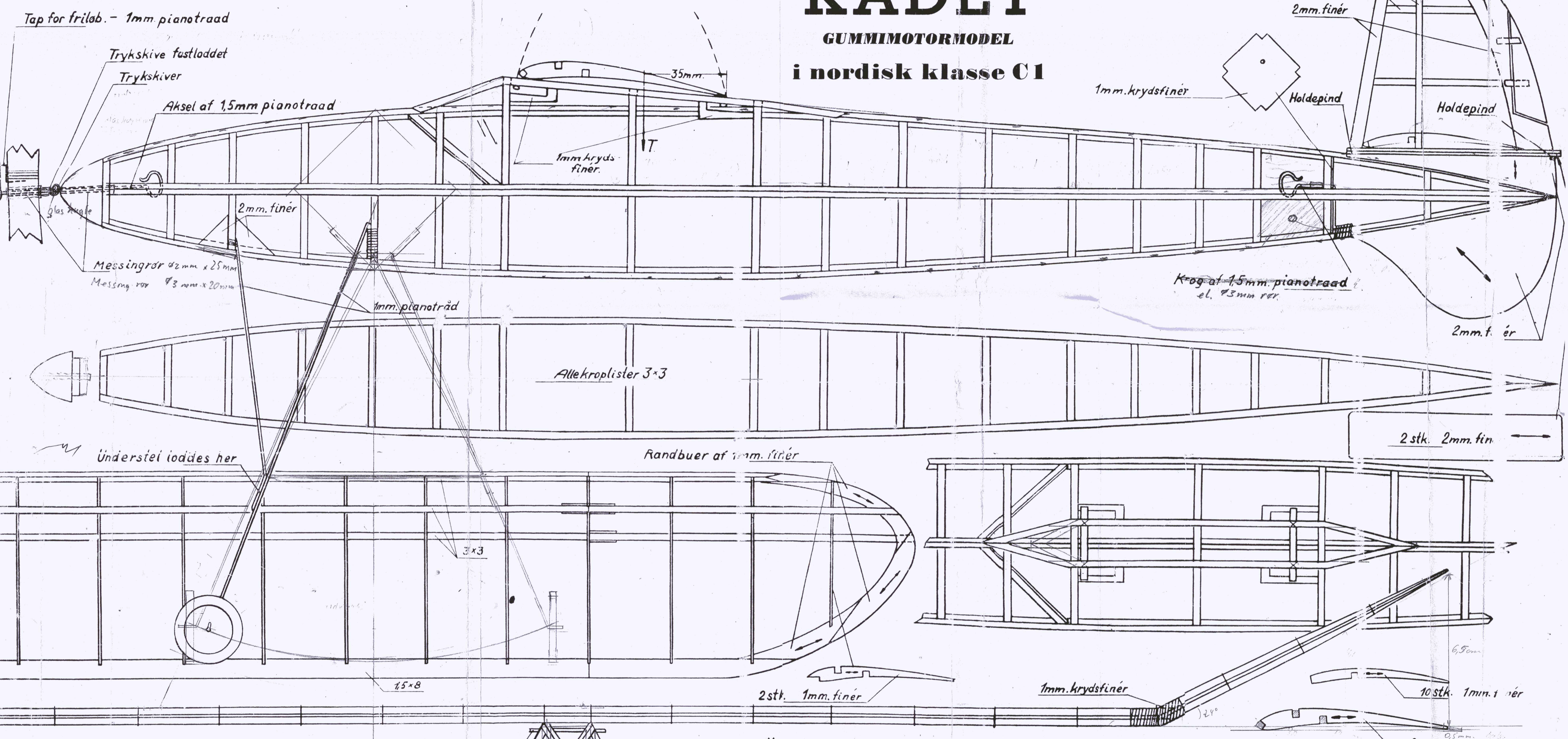


KADET

GUMMIMOTORMODEL
i nordisk klasse C1



Eneret:

DANSK IOI ELFLYVE
ODENSE *industri*

Kroplængde: 670 mm.	Propel diameter: 50 mm.
Spv.: 760 mm.	Propelstigning: 50 mm.
Plancreal: 6,7 dm.	Motor: 12 str. á 1-3
Holdedagsreal: 2 dm	Motor diameter: 11 mm