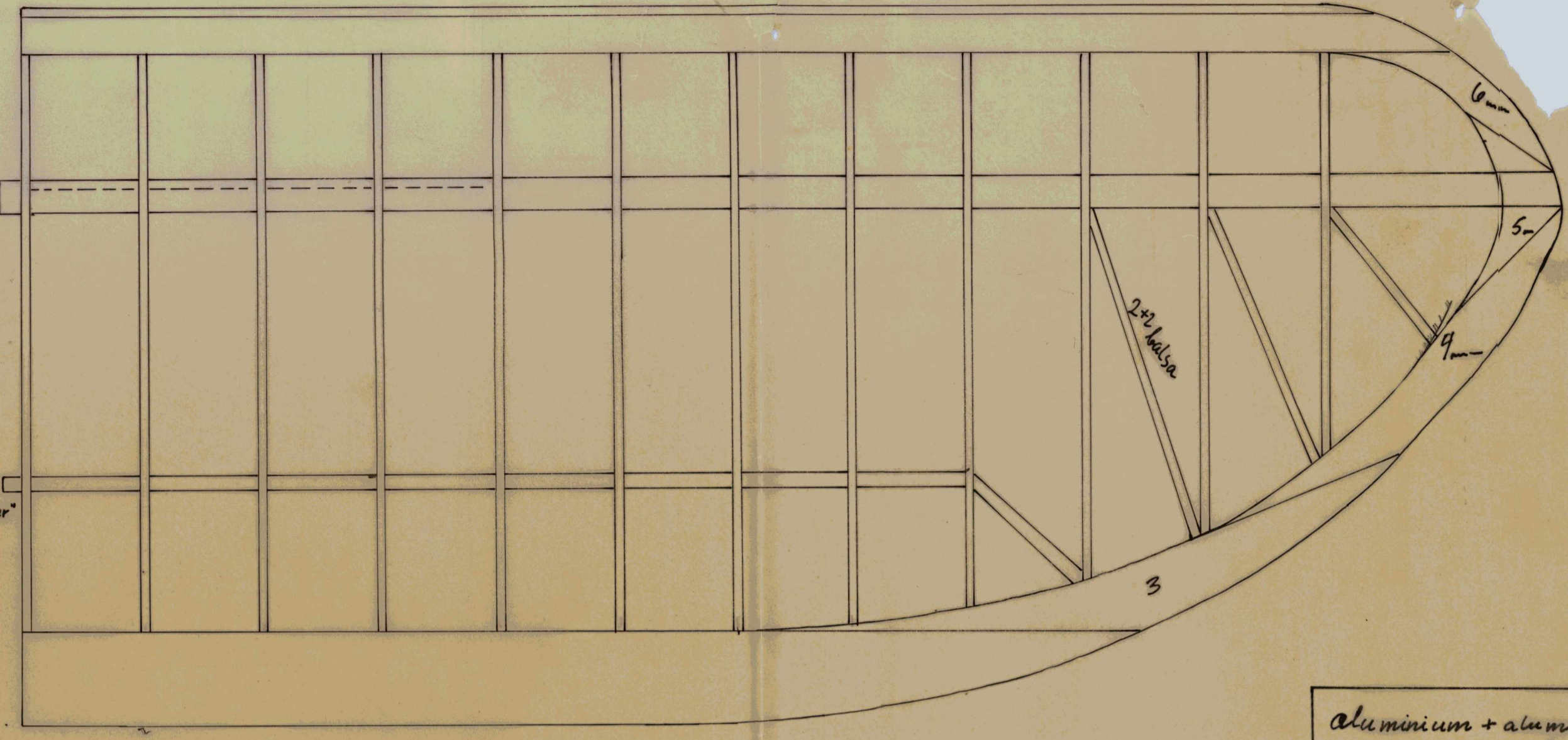
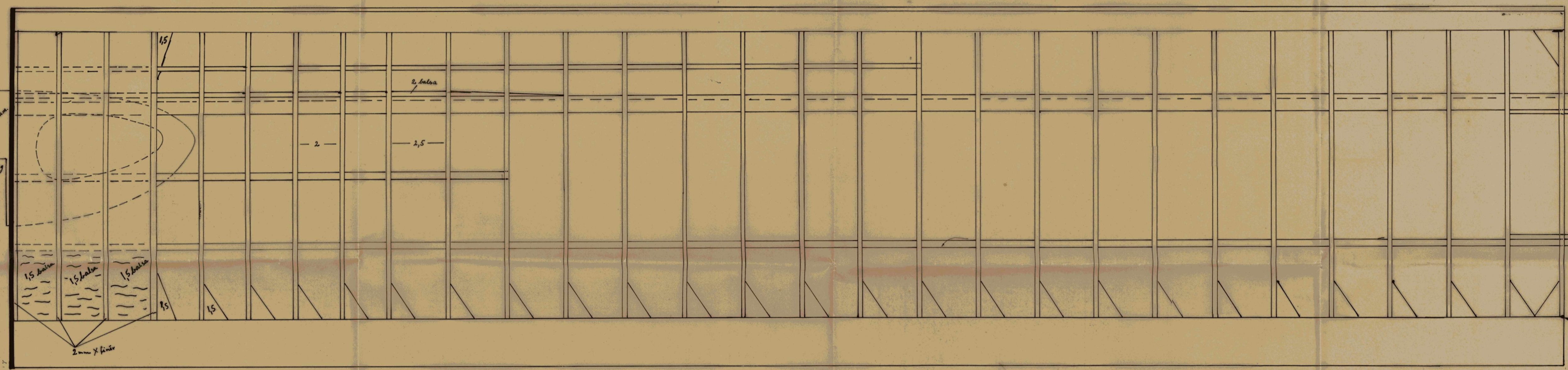
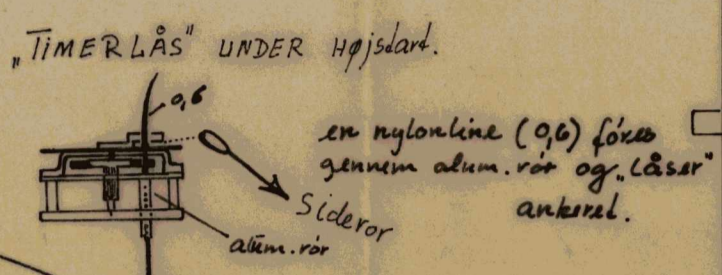
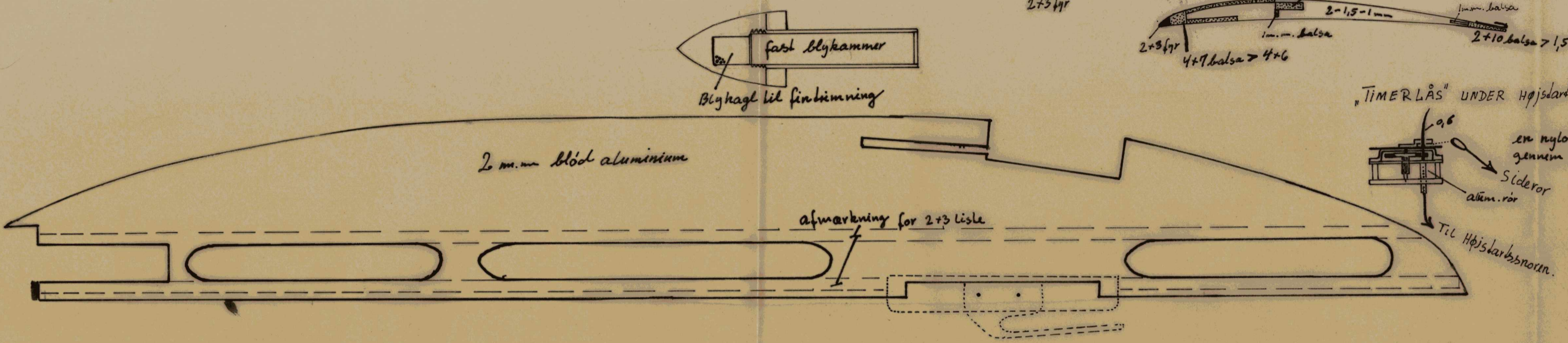


A-2 "ÉCLIPSE" 2/4-66	
SPændvidde 1940 mm.	Hovedplanareal 2,8,85 dm ²
Samlet længde 1133 mm.	Haleplanareal 4,45 dm ²
Total vægt 410 gram	Total 33,30 dm ²
Trim: Vide højrekurv - wash-in i <i>overflad</i> rørløst del (ca. 1°)	
Thomas Kongsted	

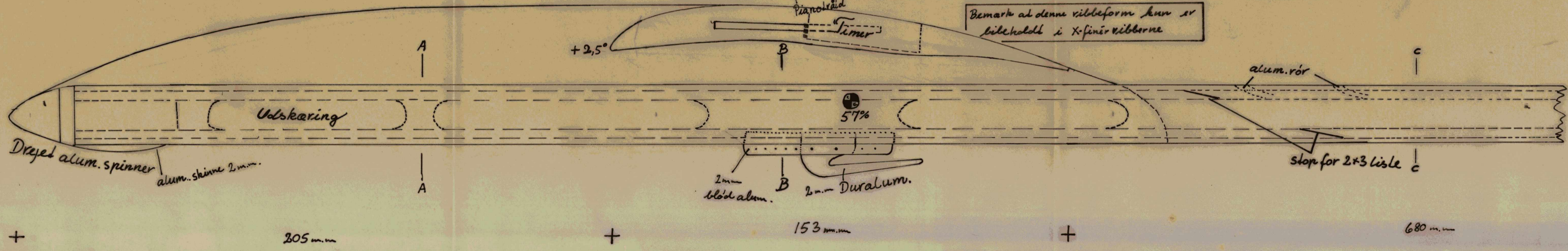
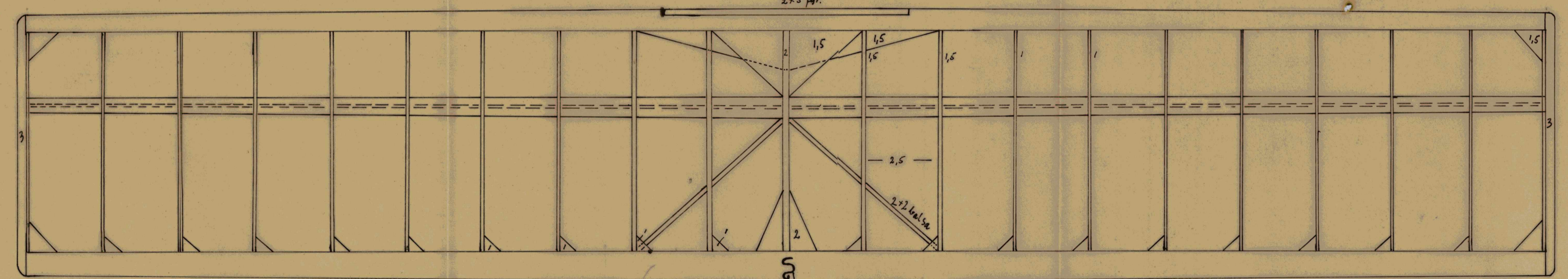


Modelen er beklædt med papir. Hovedplan lykt "model-3 pan" (20gr m²), haleplan japanpapir (10gr m²). Kroppen er ubeklædt, men kalium-dopet. Plan og haleplan dopes henholdsvis 3 og 2 gange under stadig afslibning med fint slibulol.



aluminium + aluminium
- " - + tra
limes med arildid

Vægt:	
hovedplan	165 gr.
haleplan	5 gr.
Krop	180 gr.
Ballaad i	60 gr.
Tyngdepunkt	



Bemærk at denne rilleform kun er tilbehold i x-finér ribberne

